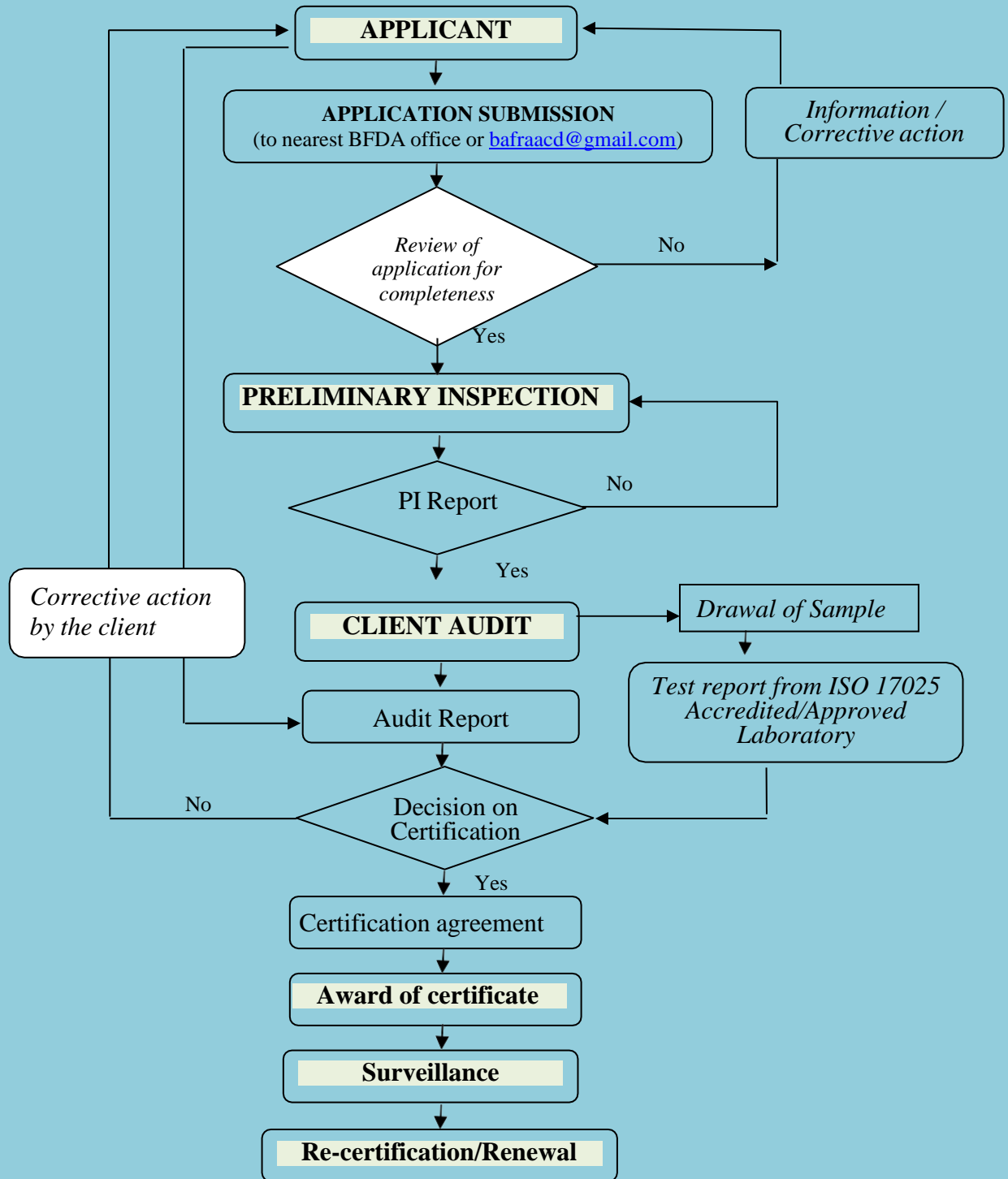


**PROCESS FLOW FOR BFDA'S PRODUCT CERTIFICATION SYSTEM**



**Turn Around Time:**

- Generally, BFDA aims to have a "Turn Around Time" (TAT) of approximately 3 months after the acceptance of fully completed application.
- This would however, depend upon the clients fulfilling the standard and certification requirements during the process.